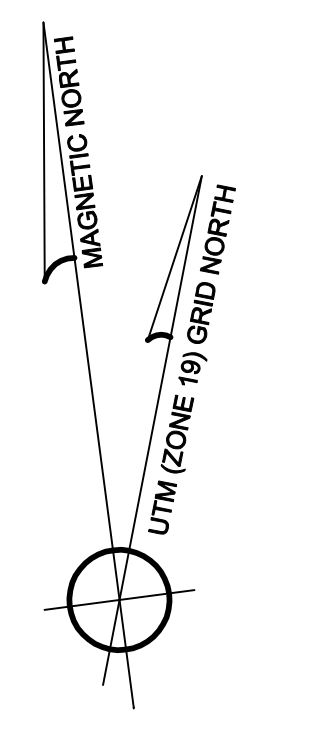
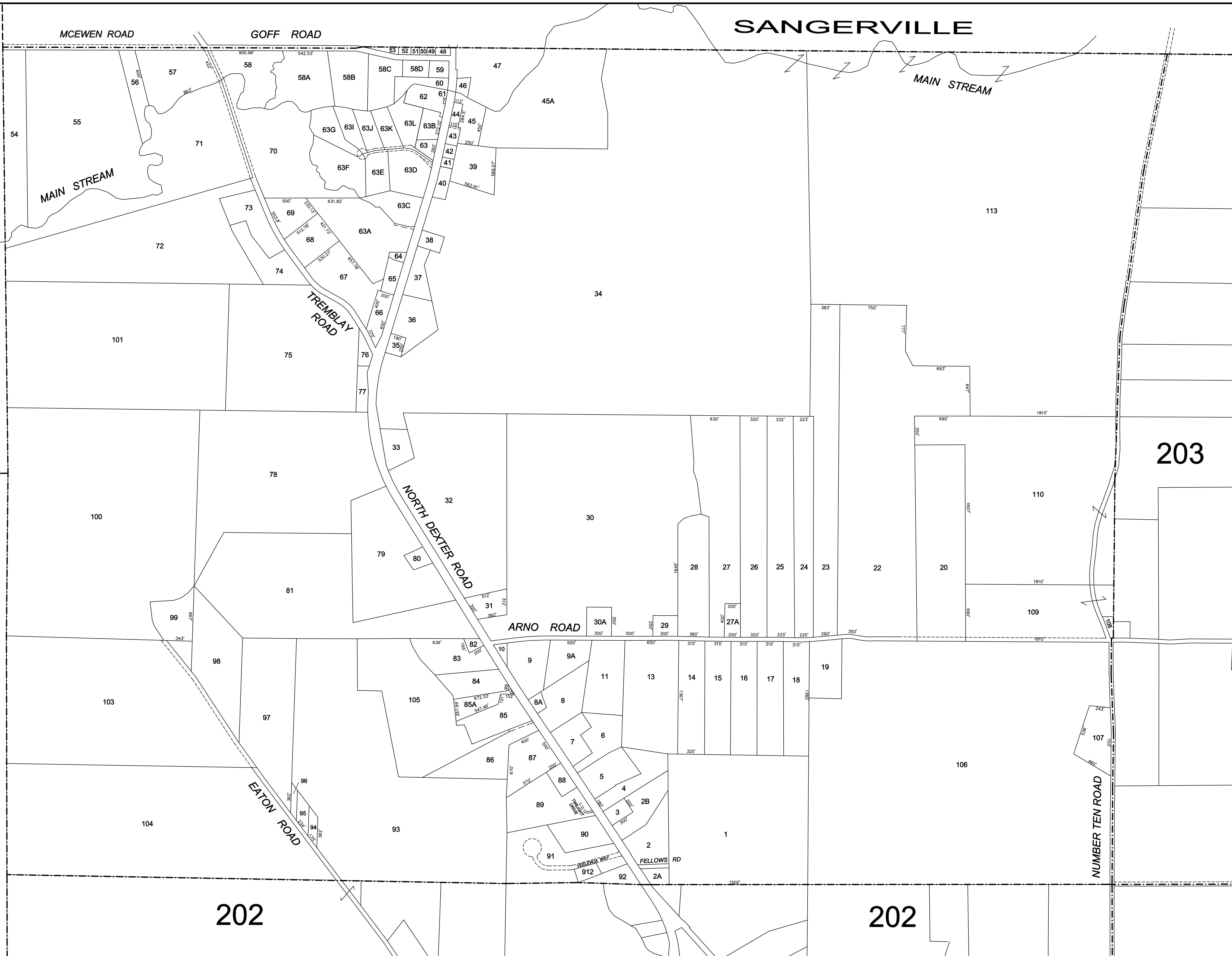


# SANGERVILLE

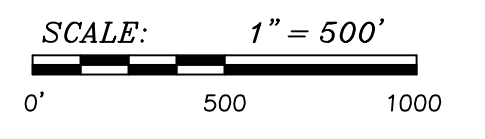
CAMBRIDGE

RIPLEY



TOWN OF  
**DEXTER**  
PENOBSCOT  
COUNTY  
STATE OF MAINE  
TAX MAPS

MAY 2010



FOR TAX ASSESSMENT PURPOSES ONLY. NOT TO BE USED FOR CONVEYANCES.

REVISION HISTORY	
Original May 2001	May 2010
October 24, 2003	
March 14, 2006	
June 2007	

Compiled by:  
**WEBBER SURVEYING, INC.**  
220 DOVER ROAD, CHARLESTON, MAINE 04422 TEL: 285-7400

MAP NUMBER:

# 201

# 202

# 202

# 203