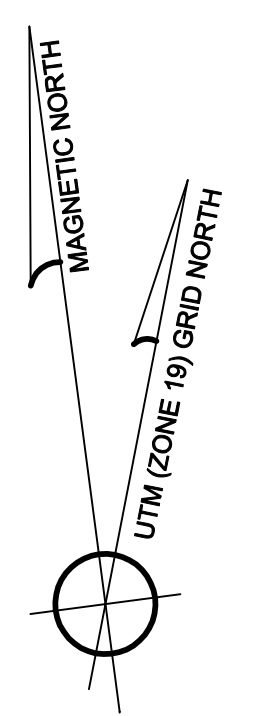
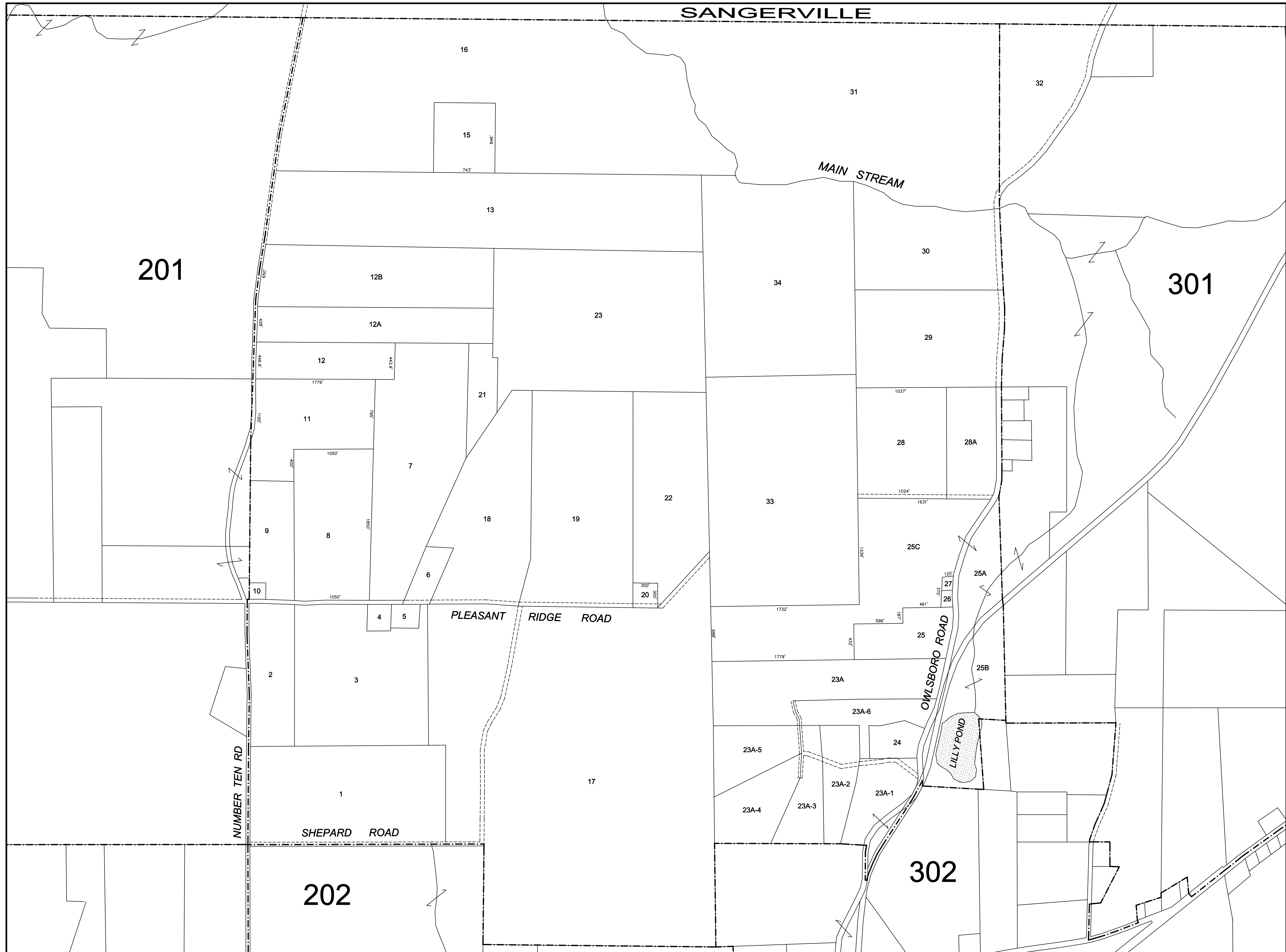
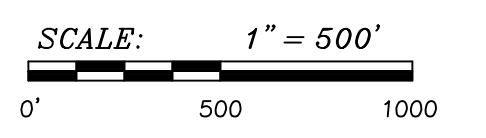


SANGERVILLE



TOWN OF
DEXTER
PENOBSCOT
COUNTY
STATE OF MAINE
TAX MAPS
MAY 2010



FOR TAX ASSESSMENT PURPOSES ONLY.
NOT TO BE USED FOR CONVEYANCES.

REVISION HISTORY	
Original May 2001	May 2010
October 24, 2003	
March 14, 2006	
June 2007	

Compiled by:
WEBBER SURVEYING Inc.
220 DOVER ROAD, CHARLESTON, MAINE 04422 TEL: 285-7400

MAP NUMBER:

203